

REV	DATE	DESCRIPTION	ECO	BY	C'H'K.
A	2018-04-10 00:00:00 EDT	CREATED NEW SALES DRAWING	48861	YR	VS

CATALOG NO.	CONDUCTOR CODE (AWG)	BOLT SIZE	FIG. NO.	DIMENSIONS								DIELESS (# CRIMPS)	INSTALLATION TOOLING			COLOR CODE	DIE INDEX	WIRE STRIP LENGTH	
				B ±.06	C ±.04	E ±.02	(H)	K DIA ±.02	L ±.09	N ±.04	(T)		Y MIN.	MECHANICAL MD6, OUR840, MD7-34R	HYDRAULIC BCT500HS, Y500CHS				Y35, Y39 Y750, Y46 PAT750
YAZ8C2TC10FX	8 AWG CLASS B,C,G,H, I,K,M DLO (37/24) #8 SOL #6 SOL	#10	1	.81 [21]	.41 [10]	.62 [16]	---	.21 [5]	2.20 [56]	.25 [6]	.08 [2]	.90 [23]	Y8MRB-1 (2) MY29-11 (2) YIMRTC (2) Y8IKFT (1) Y8IKFTMBH (1) PAT8IKFT-18V (1) Y122CMR (2)	W8CVT (2) W8CRT (2) X8CRT (2)	W8CVT (2) W8CRT (2) X8CRT (2)	U8CRT (2)	RED	49	1
YAZ8C2TC10FX45			2	.41 [10]	.62 [16]	.94 [24]	.21 [5]	2.09 [53]	.25 [6]	.08 [2]	.90 [23]								
YAZ8C2TC10FX90			3	.62 [16]	1.17 [30]	.21 [5]	1.37 [35]	.25 [6]	.08 [2]	.90 [23]									
YAZ8C2TC10E2FX			1	.75 [19]	---	.21 [5]	2.33 [59]	.25 [6]	.08 [2]	1.03 [26]									
YAZ8C2TC10E2FX45			2	.75 [19]	.94 [24]	.21 [5]	2.22 [56]	.25 [6]	.08 [2]	1.03 [26]									
YAZ8C2TC10E2FX90			3	.41 [10]	.75 [19]	1.17 [30]	.21 [5]	1.50 [38]	.25 [6]	1.03 [26]									
YAZ8C2TC14E1FX			1	.44 [11]	1.00 [25]	---	.27 [7]	2.70 [69]	.31 [8]	.08 [2]	1.34 [34]								
YAZ8C2TC14E1FX45			2	.44 [11]	1.00 [25]	.93 [24]	.27 [7]	2.58 [66]	.31 [8]	.08 [2]	1.34 [34]								
YAZ8C2TC14E1FX90			3	.44 [11]	1.00 [25]	1.16 [29]	.27 [7]	1.87 [47]	.31 [8]	.08 [2]	1.34 [34]								
YAZ8C2TC14FX			1	.62 [16]	---	.27 [7]	2.32 [59]	.31 [8]	.08 [2]	.96 [24]									
YAZ8C2TC14FX45			2	.62 [16]	.93 [24]	.27 [7]	2.20 [56]	.31 [8]	.08 [2]	.96 [24]									
YAZ8C2TC14FX90			3	.62 [16]	1.15 [29]	.27 [7]	1.49 [38]	.31 [8]	.08 [2]	.96 [24]									
YAZ8C2TC14E2FX			1	.75 [19]	---	.27 [7]	2.45 [62]	.31 [8]	.08 [2]	1.09 [28]									
YAZ8C2TC14E2FX45			2	.75 [19]	.93 [24]	.27 [7]	2.33 [59]	.31 [8]	.08 [2]	1.09 [28]									
YAZ8C2TC14E2FX90			3	.44 [11]	.75 [19]	1.16 [29]	.27 [7]	1.62 [41]	.31 [8]	1.09 [28]									
YAZ8C2TC38FX			1	.58 [15]	1.00 [25]	---	.40 [10]	2.89 [73]	.41 [10]	.06 [1]	1.43 [36]								
YAZ8C2TC38FX45			2	.58 [15]	1.00 [25]	.93 [24]	.40 [10]	2.72 [69]	.41 [10]	.06 [1]	1.43 [36]								
YAZ8C2TC38FX90			3	.81 [21]	.58 [15]	1.00 [25]	1.12 [28]	.40 [10]	2.05 [52]	.41 [10]	.06 [1]	1.43 [36]							

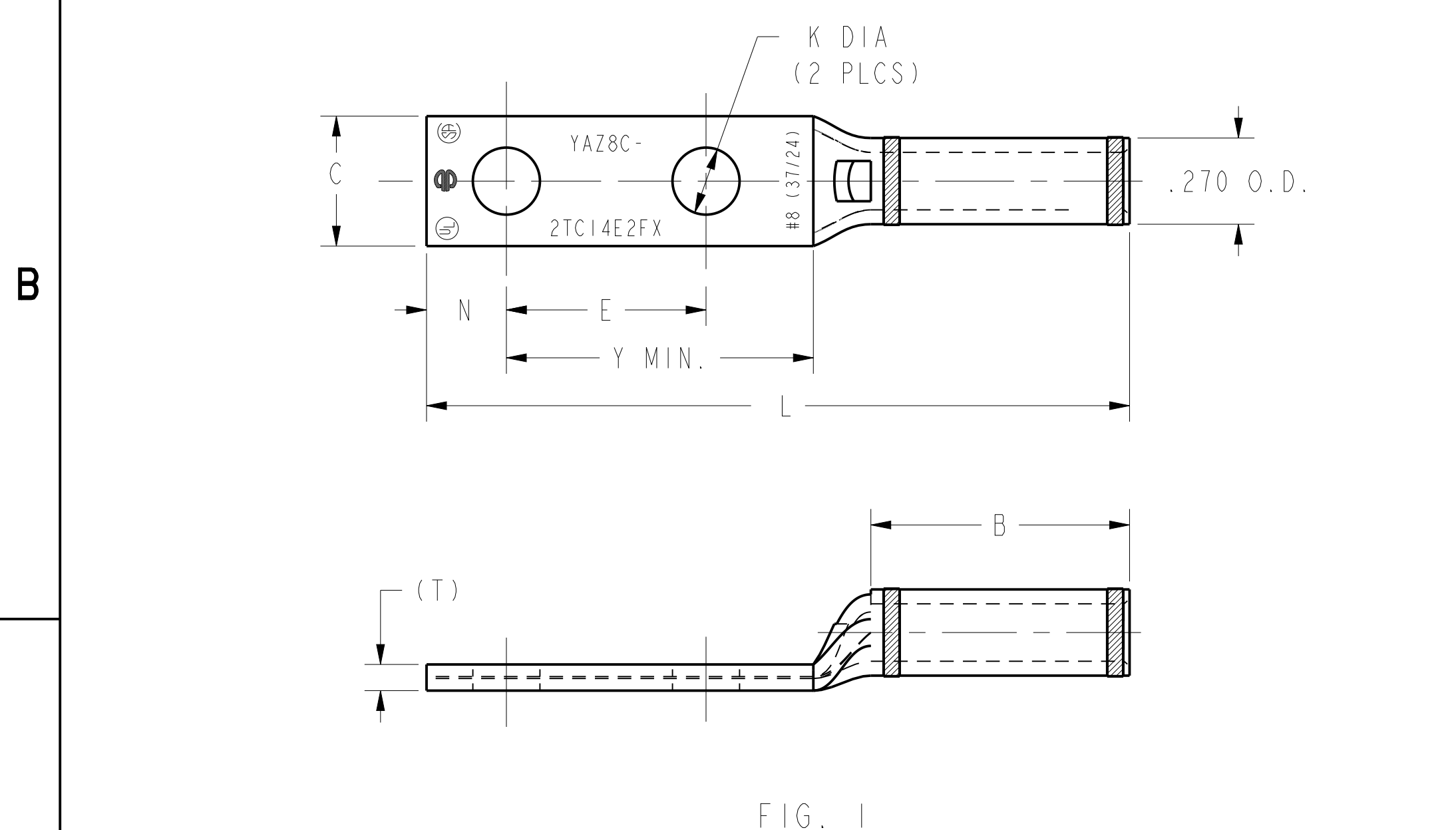


FIG. 1

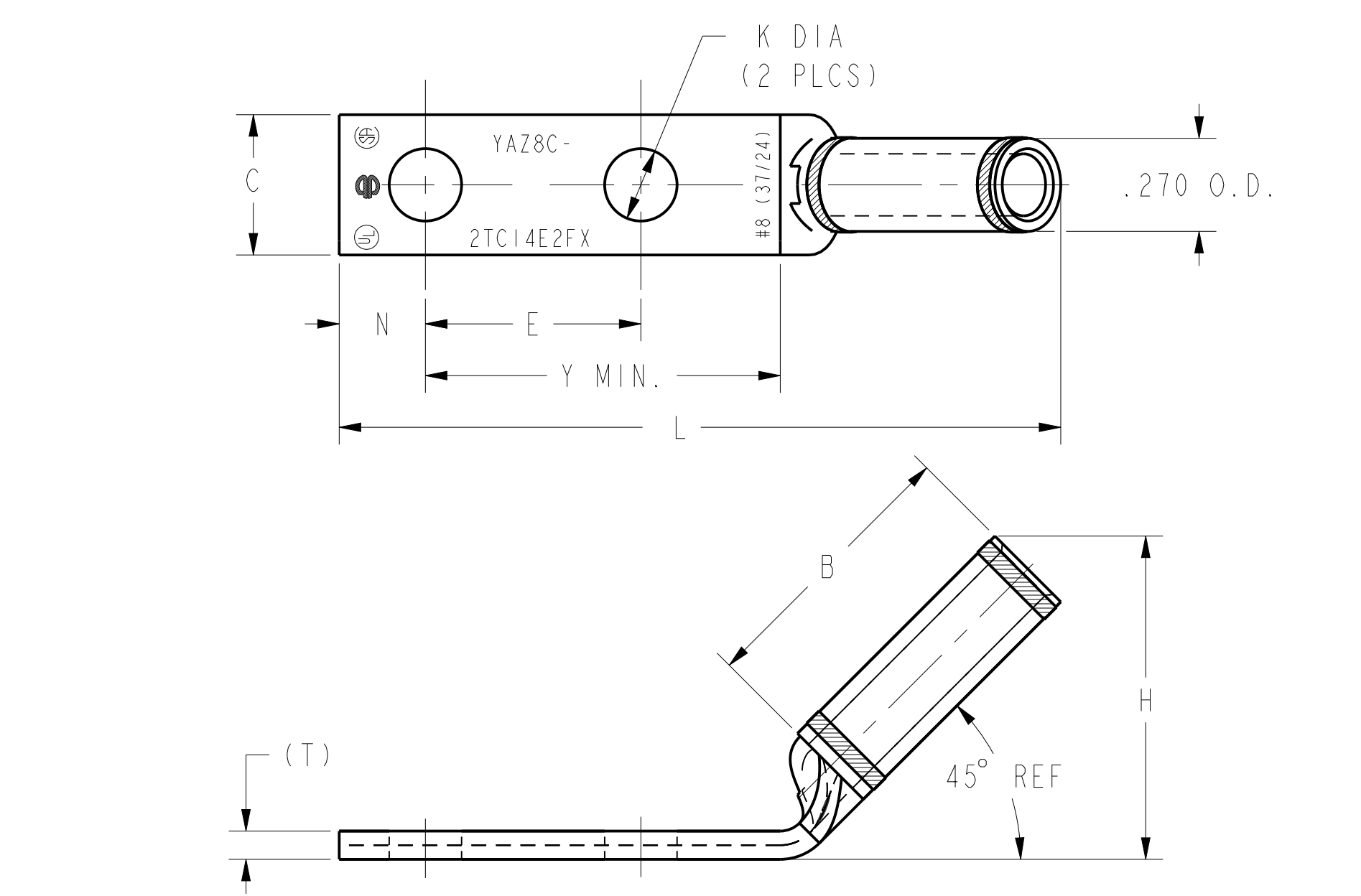


FIG. 2

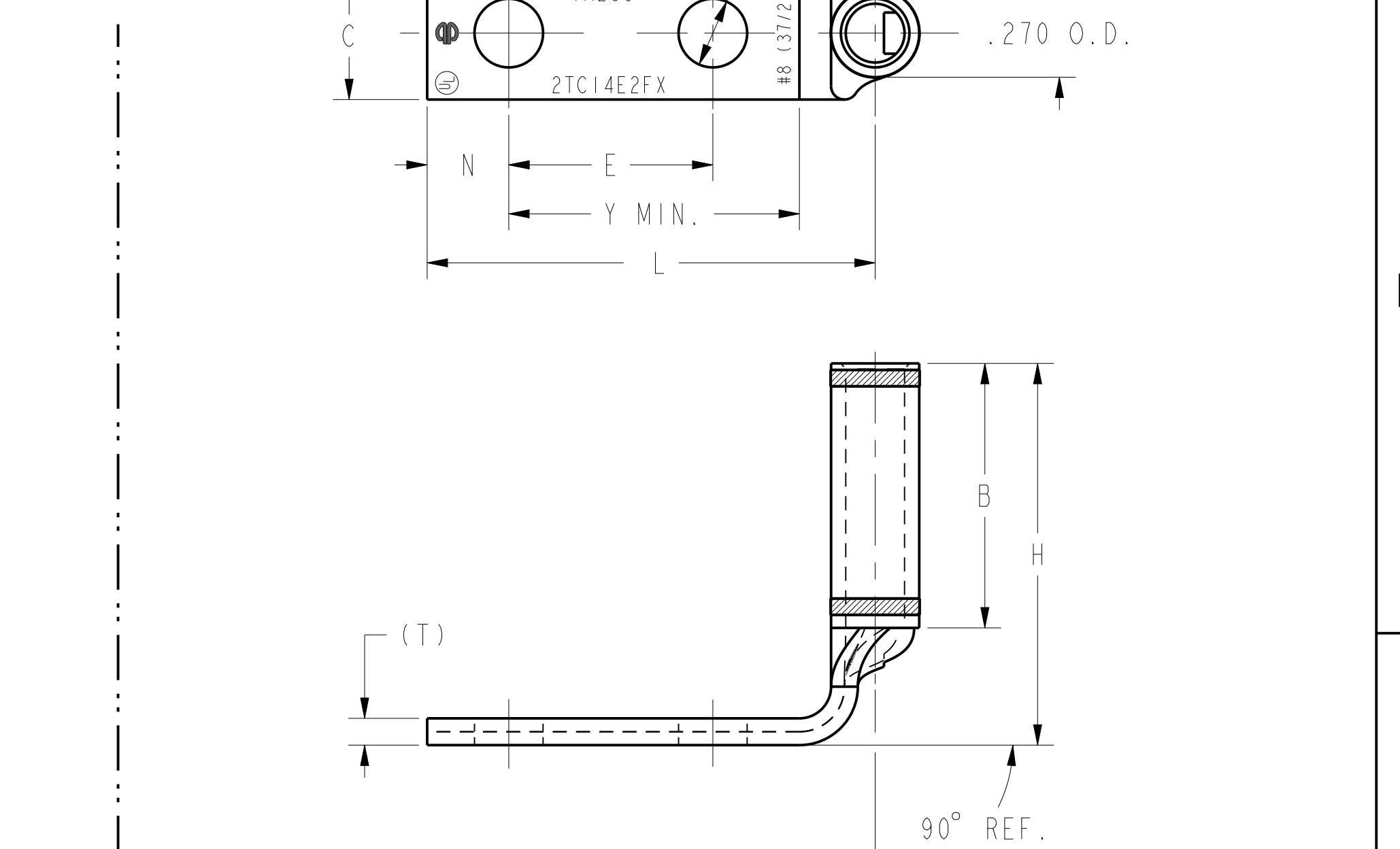


FIG. 3

- NOTES:
1. MATERIAL: COPPER TUBING.
 2. FINISH: TIN PLATED.
 3. CATALOG # PUADP-1 ADAPTOR IS REQUIRED TO USE "U" DIES IN Y46 SERIES TOOLS.
 4. DIMENSIONS, METRIC WIRE, & METRIC BOLT SIZES IN BRACKETS [] ARE IN MILLIMETERS. DIMENSIONS ARE ROUNDED OFF TO THE NEAREST MILLIMETER, UNLESS OTHERWISE NOTED, AND ARE FOR REFERENCE ONLY.
 5. UL LISTED AND CSA CERTIFIED WIRE CONNECTORS.

TO ORDER BURNDY® PRODUCTS CALL		HYLUG™ #8 (37/24)	
UNITED STATES 1-800-346-4175 (LONDONDERRY, NH)		ITEM NO: N/A	
CANADA: 1-800-361-6975 (QUEBEC) 1-800-387-6487 (ALL OTHER PROVINCES)		CAT. NO: YAZ8C2TC---FX (TABLE)	
FOR PRODUCT INFO: http://www.burndy.com		DRAWN BY: R.YOGARAJ 04/05/18	
		CHECKER: S.VENKATESAN 04/05/18	
		DSN APPVL: --	
		MFG APPVL: --	
		QA APPVL: --	
		MKT APPVL: N/A	
		SCALE: 2:1	
		PROD FAM: CM&R COMPRESSION	
		DRAWING NO	
		PROJECT #: --	
		SIZE	
		50090983	
		DOCUMENT TYPE: Sales	
		SHEET 1 OF 1	
		REV	
		A	